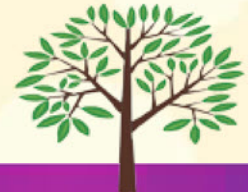




A spectrum of fresh expressions of church



1

Renewal of existing community through mission and recontextualisation

- *Renewal of all age worship provision*
- *Rethinking a midweek service*

2

Reconceiving an existing mission project or service as no longer a stepping stone but "church"

- *A youth group grows into a youth congregation*
- *A lunch club for the elderly adds worship and becomes a midweek congregation and community.*

3

A new mission initiative to create a new community within a single parish/circuit; largely lay led; small budget

- *A midweek after school community meeting for a meal and worship*
- *An informal service in a local leisure centre*

4

A major mission initiative to create a new community across several parishes/circuits; full time post; recognised by BMO¹

- *A new network church across a city centre*
- *A home based church plant in a new housing area*

Common principles and issues: mission; the need for a mixed economy; (re)contextualisation; 360 degree listening; creation of a new community; the potential to be fully church; the provision of ministry; connection and oversight.

The potential for the growth of new communities in all four areas is very, very significant.

¹Bishop's Mission Order

A fresh expression is a form of church for our changing culture established primarily for the benefit of people who are not yet members of any church. It will come into being through principles of listening, service, incarnational mission and making disciples. It will have the potential to become a mature expression of church shaped by the gospel and the enduring marks of the church and for its cultural context.